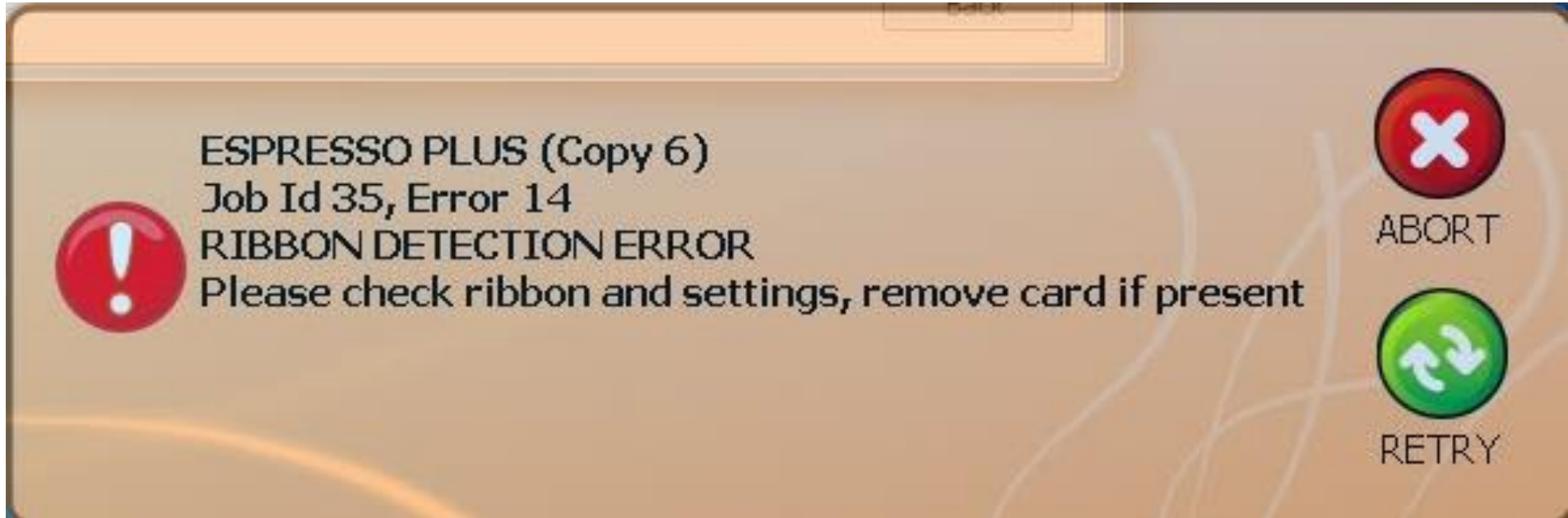


How to avoid Ribbon Detection Error in the Espresso printer :

If you have a ribbon detection error, It will appear the below shown error messages in the PC Espresso printer status monitor.



Step 1 :

Matica Dcp Service Tool - Ver 1.00.10.00



Configure Sensors Color Panel Led Margins Final Test Magnetic Module SmartCard Module

Printer Serial Number

0008024

Printhead Serial number

WRITE Printhead
Serial Number

Command

pAS 2

SEND
COMMAND

CLEAR

pAS 2->Yellow: 60<83 212>173 Magenta: 186>173 209>173 Cyan: 213>173 63<83 Black: 249>173
252>173 Overlay: 57<83 25<83<ACK>

Firmware

Fw version required 1.01.52

Fw loaded 1.01.57

UPDATE FW

Installed Options

The printer with serial number 0008024 has the following options:

- Magnetic encoding module

CHECK ETHERNET
CONNECTION

CHECK USB HOST
PORT

Ribbon Motor

CHECK SPEED

Pwm	Requested speed	Speed
1048	405	ND
1060	585	ND
95	540	ND
80	480	ND

Open USB
Communication

NEXT

Step 2:

Keep inside the Printer supporting “YMCKO” ribbon and calibrate the ribbon panel.

Matica Dcp Service Tool - Ver 1.00.10.00

Configure Sensors Color Panel Led Margins Final Test Magnetic Module SmartCard Module

Open USB Communication

Sensor Type	Sensor Value	PWM used
Yellow Sensor	000	000
Blue Sensor	000	000

MaticaDcpServiceTool

INSERT the ribbon support with an YMCKO ribbon

OK

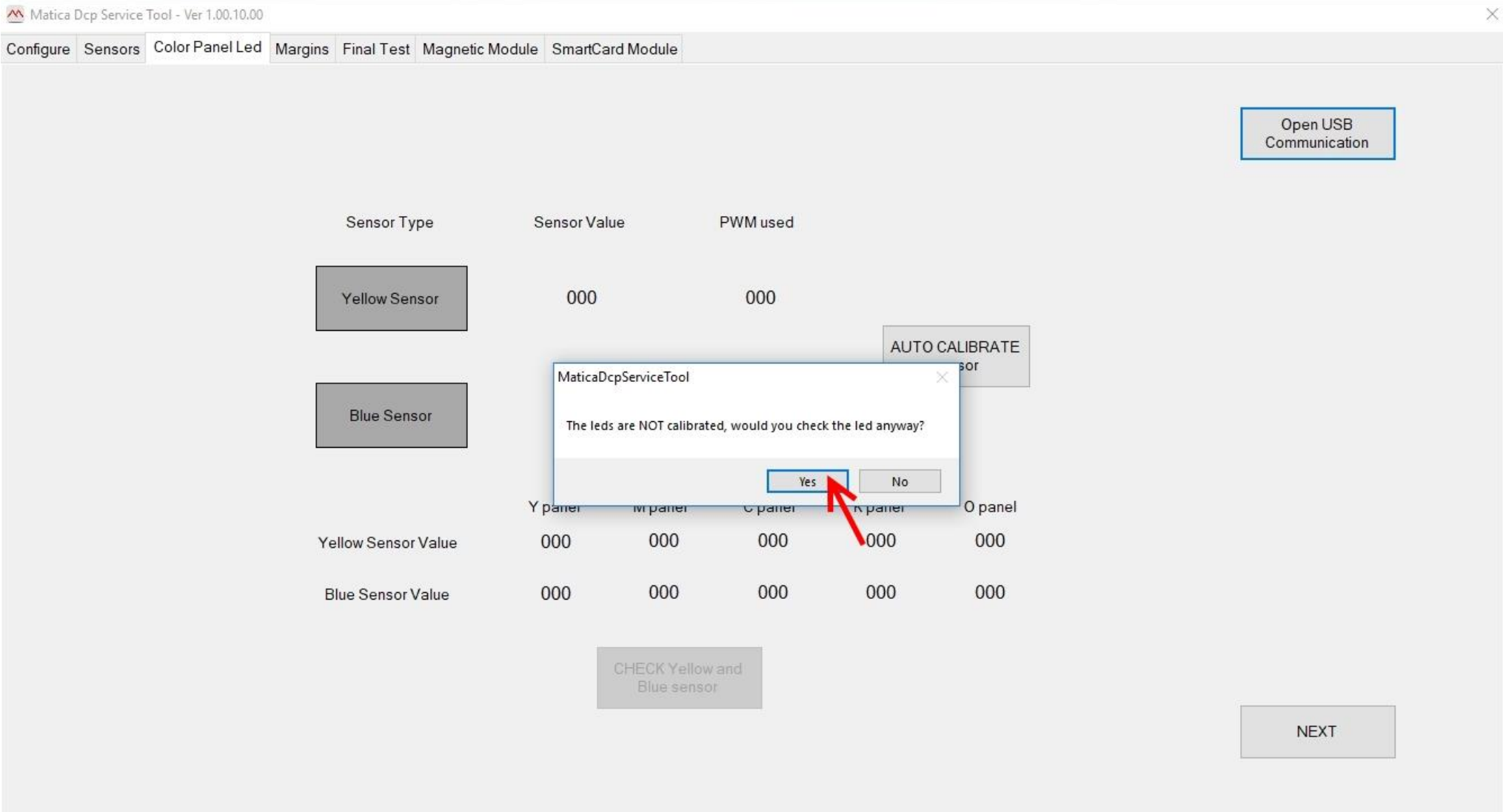
AUTO CALIBRATE sensor

	Y panel	M panel	C panel	K panel	O panel
Yellow Sensor Value	000	000	000	000	000
Blue Sensor Value	000	000	000	000	000

CHECK Yellow and Blue sensor

NEXT

Step 3 :



Step 4 :

Once you have been successfully calibrated the ribbon, it will show you all the panel Green mark. [Note: sometime either one of the panel might have shown you red even though it will work fine.]

Open USB
Communication

Sensor Type	Sensor Value	PWM used			
Yellow Sensor	000	000			
			AUTO CALIBRATE sensor		
Blue Sensor	000	000			
	Y panel	M panel	C panel	K panel	O panel
Yellow Sensor Value	57	186	214	251	55
Blue Sensor Value	212	209	63	252	24

CHECK Yellow and
Blue sensor

NEXT

Step 5:

If the above step have been not successfully calibrated. Kindly look out this below instruction to avoid this error.

- **Try to Check the Ribbon motor rotation and timing belt.**
- **Try to check the color in / color out sensor working condition as well as you can clean it well using alcohol swaps.**
- **Try to check the ribbon Encoder and Encoder sensor.**